

Driving Urban Transitions to a Sustainable Future

Proposal for an Urban Partnership under Horizon Europe

Margit Noll

Chair of the JPI Urban Europe Management Board

info@jpi-urbaneurope.eu



Evidence-based Policy Making Supported by Challenge-driven Research & Innovation



Policy

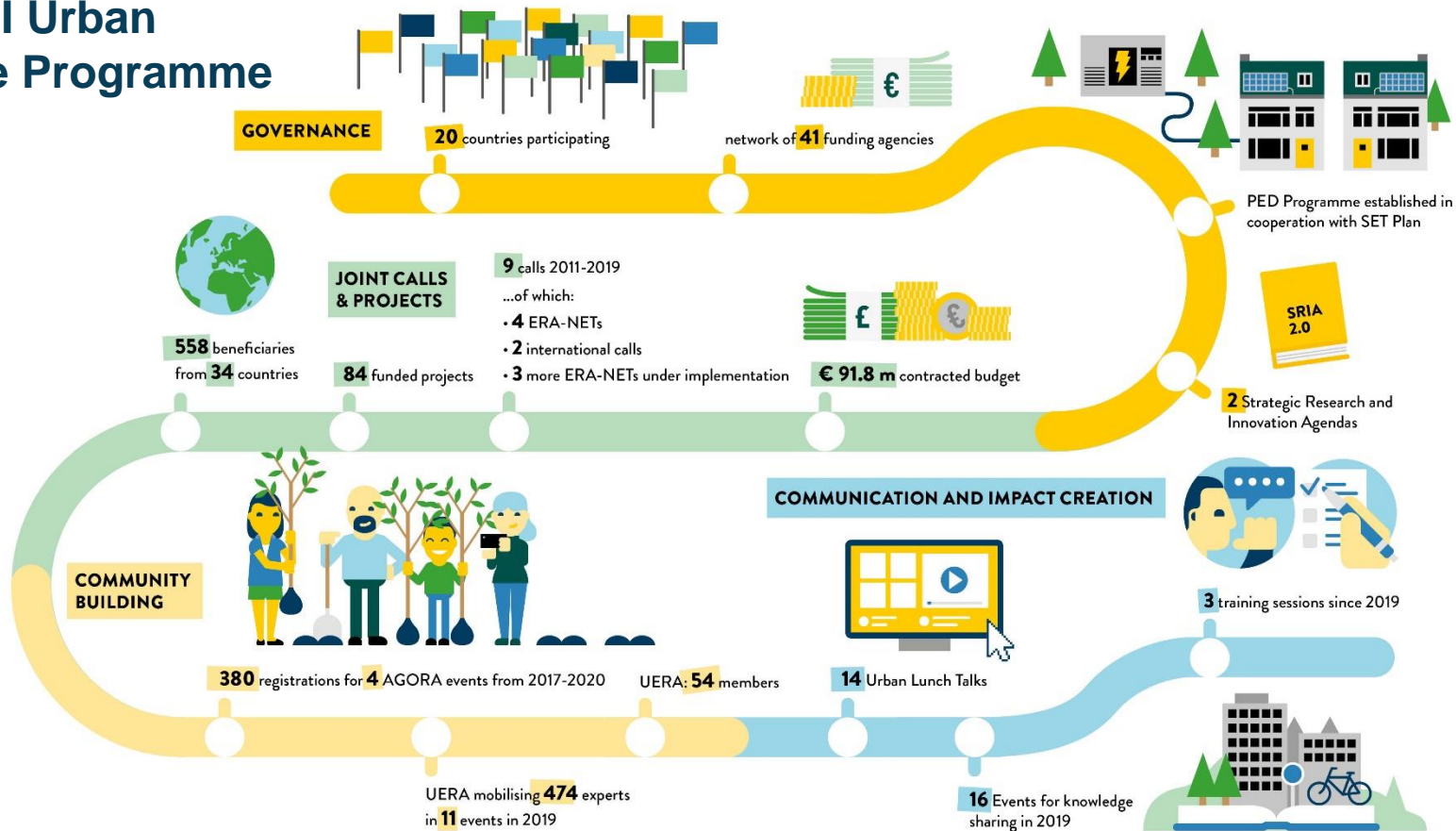
specification of needs for research and innovation, new forms of governance, regulatory frameworks

experimentation and co-development of new approaches, capacity building, good practice

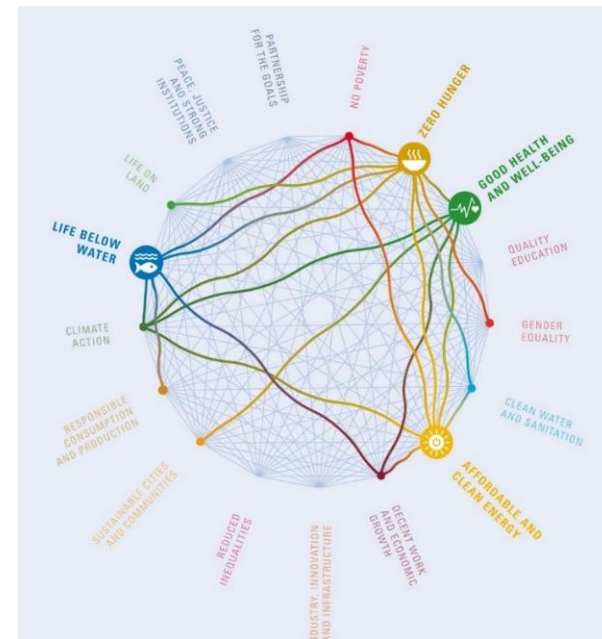
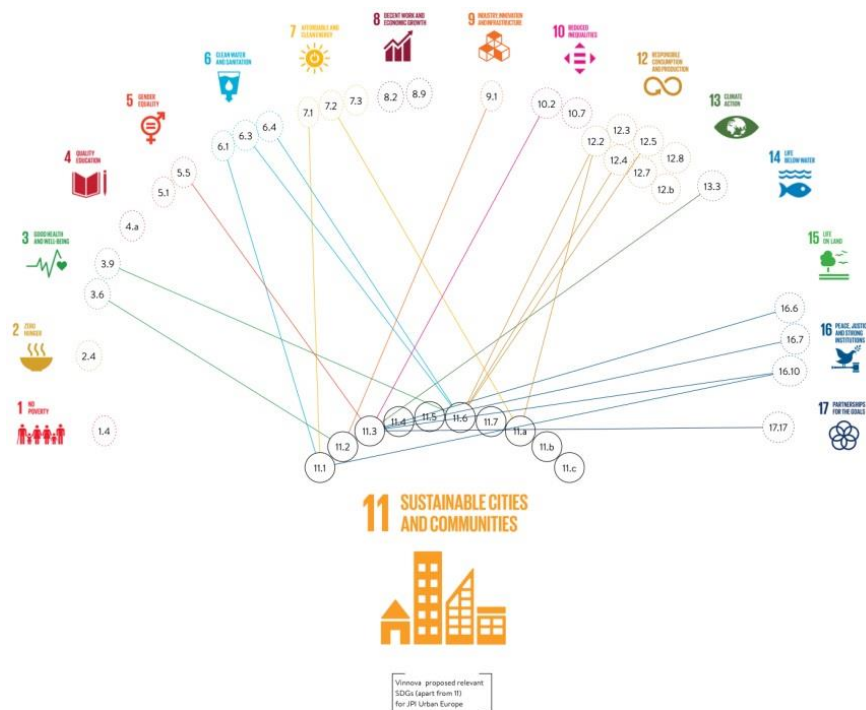


Research and Innovation

The JPI Urban Europe Programme



Complex Urban Challenges Require Integrated Policy Implementation



Source: International Science Council: SDGs Guide to Interactions, 2018

Dilemmas as Innovation Drivers

How can city authorities exploit the potential of digitalisation for urban planning and governance while avoiding the risks of new inequalities and exclusion as well as addressing the consequences for jobs, value chains and privacy?



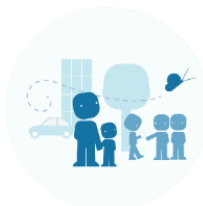
How can city authorities get prepared for unexpected, non-linear events and at the same time ensure highest liveability for its inhabitants?



How can city authorities answer the demand for densification and infrastructure provision under the constraints of scarce resources, financial limitations, accessibility and affordability for all?



How can city authorities provide multi-functional public spaces that serve the purposes of all groups of society within the given ownership situations, stakeholder interests, security concerns or densification needs?



Challenge-driven Innovation to Address Dilemmas

- **Problem orientation** - Address key challenges for city administration and municipalities
- **City empowerment** - Engage and empower urban authorities actively throughout the project
- **Innovation orientation** – Conduct research and innovation activities that add value for cities and municipalities
- **Capacity building** – Include activities that lead to capacity building in city authorities, real-estate, infrastructure and service providers, civil society. etc.
- **Output orientation** - Deliver clear and useful outputs and solutions that contribute to the implementation of the cities' strategies

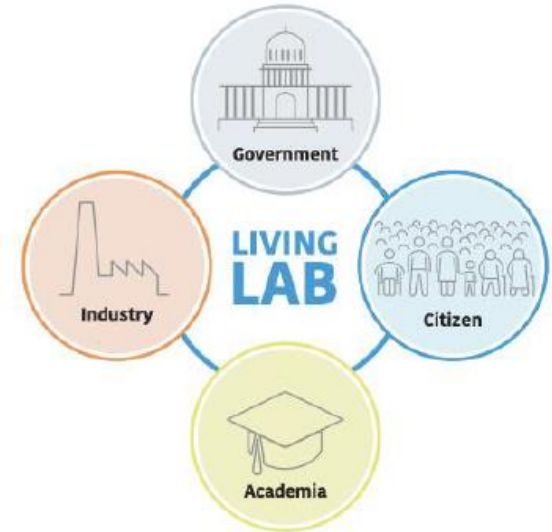
Co-design and Experimentation to Enhance Impact

Urban Living Labs are ...

...a form of experimental governance, whereby urban stakeholders develop and test new technologies, products, services and ways of living to produce innovative solutions ...'¹

... user-centred, open innovation ecosystems based on systematic co-creation integrating research and innovation in real life communities and settings²

- Equity and inclusiveness
- Integration in local and regional 'proper' governance
- Capacity building in public administrations and society
- Community and neighbourhood level

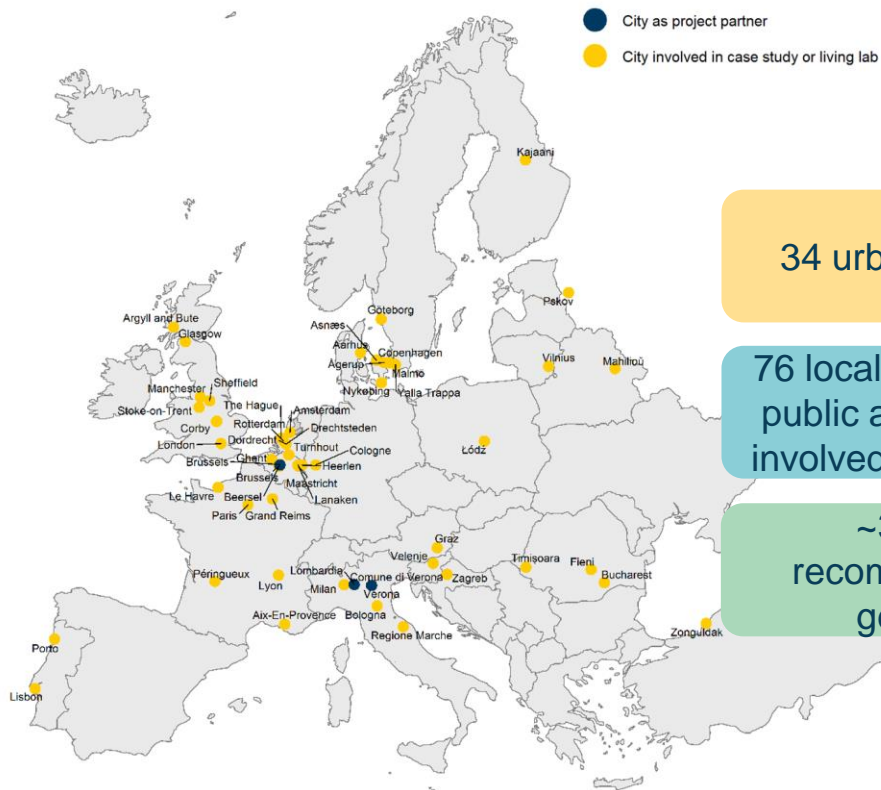


Quadruple helix model: The Living Lab approach manages and contributes to local and transnational exosystems and interdisciplinary teams which foster inclusion within urban and regional context. (European Network of Living Labs)

¹ <https://www.slideshare.net/openlivinglabs/cities-as-living-labs-and-large-scale-experimentations>

² European Network of Living Labs ENoLL, <https://enoll.org>

Example: ERA-NET Smart Urban Futures (ENSUF)



34 urban living labs

76 local governments /
public administrations
involved in the projects

~30 policy
recommendations
generated

URBANEUROPE



AN OVERVIEW OF POLICY BRIEFS
ERA-NET Cofund
Smart Urban Futures



www.jpi-urbaneurope.eu/ENSUFpolicy

Stepping up Urban Transformation Efforts



A European Partnership on Driving Urban Transitions

The DUT Partnership steps up the game to tackle urban challenges. We enable local authorities and municipalities, business and citizens to translate global strategies into local action. We develop the skills and tools to make urban change happen and boost the urgently needed urban transformations.



Innovation Pillars of the DUT Partnership



**Positive Energy Districts
and Neighbourhoods**
transforming the urban energy
system



**Green Urban
Economies**
an integrated approach for
urban greening and circularity
transitions



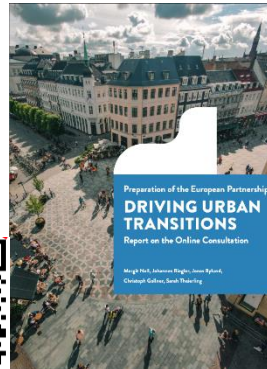
**The 15 Minutes
Cities**
rethinking the urban
mobility system and space

Upcoming Opportunities to Engage

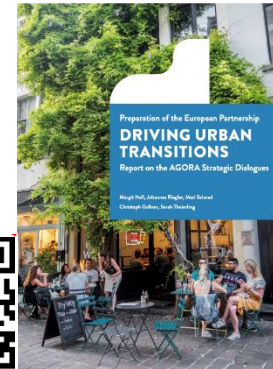
ERA-NET Urban Accessibility and Connectivity	Calls planned for spring 2021	Topics related to the implementation of sustainable mobility systems
ERA-NET Enhancing Urban Transformation Capacities	1. Call planned to open end of 2020	<ul style="list-style-type: none">• Urban circular economies• Community-based developments and urban innovation ecosystems• Robust and resilient urban infrastructure and built environment
ERA-NET Positive Energy Districts and Neighbourhoods	1. Call planned for spring 2021	

Stay Connected – Get Engaged

- Margit Noll, margit.noll@ffg.at
- Upcoming events: Urban Lunch Talks
<https://jpi-urbaneurope.eu/urban-lunch-talks-a-webinar-series/>
- Register for the JPI Urban Europe newsletter to stay updated
<https://jpi-urbaneurope.eu/jpi-urban-europe-newsletters-and-news-alerts/>
- Consultation reports available:



<https://tinyurl.com/dut-consultation>



<https://tinyurl.com/dut-agera>