

Integration of migrants

creating sustainable dynamics and impacts



*A Place-based Approach to Migrant
Integration*

*Final Conference of the JRC ERA
"International Migrants in Functional
Urban Areas"*

*Grzegorz Gajewski,
Programme manager, DG Migration and Home Affairs
European Commission*



Past and current dynamics to build sustainable and strategic actions

2007-2027 - developing mechanics to create impacts



➡ **Policy orientations – EU Action plan on integration and inclusion**

➡ **Funding - increase of dedicated resources from 800 million EUR under the EIF to 9.8 billion EUR in 2021-2027 under the AMIF, synergies and pooling of EU resources**



➡ **Support and coordination structures and tools – European Integration Network, Toolkit etc**



Objectives

- To complement and leverage local/regional/national efforts and resources
- To empower migrants, organisations, authorities and local communities



Action plan on Integration and Inclusion 2021-2027

Main principles



Combining place and people

Fostering participation and encounters with the host communities

- Involving migrants and migrant organisations in decision-making processes.
- Community sponsorship programmes for beneficiaries of international protection
- Integration award for schools, local communities, artistic and cultural organisations, and sports and youth clubs
- Football festivals / European football championship
- Projects to raise awareness on facts and figures and main trends of integration for journalists





Leverage of actions through EU funding

Dedicated EU fund – Asylum Migration and Integration Fund

Budget

- MFF 2014-2020 – EUR 7.5 billion
- MFF 2021-2027 – EUR 9.8 billion

8 priorities on integration including

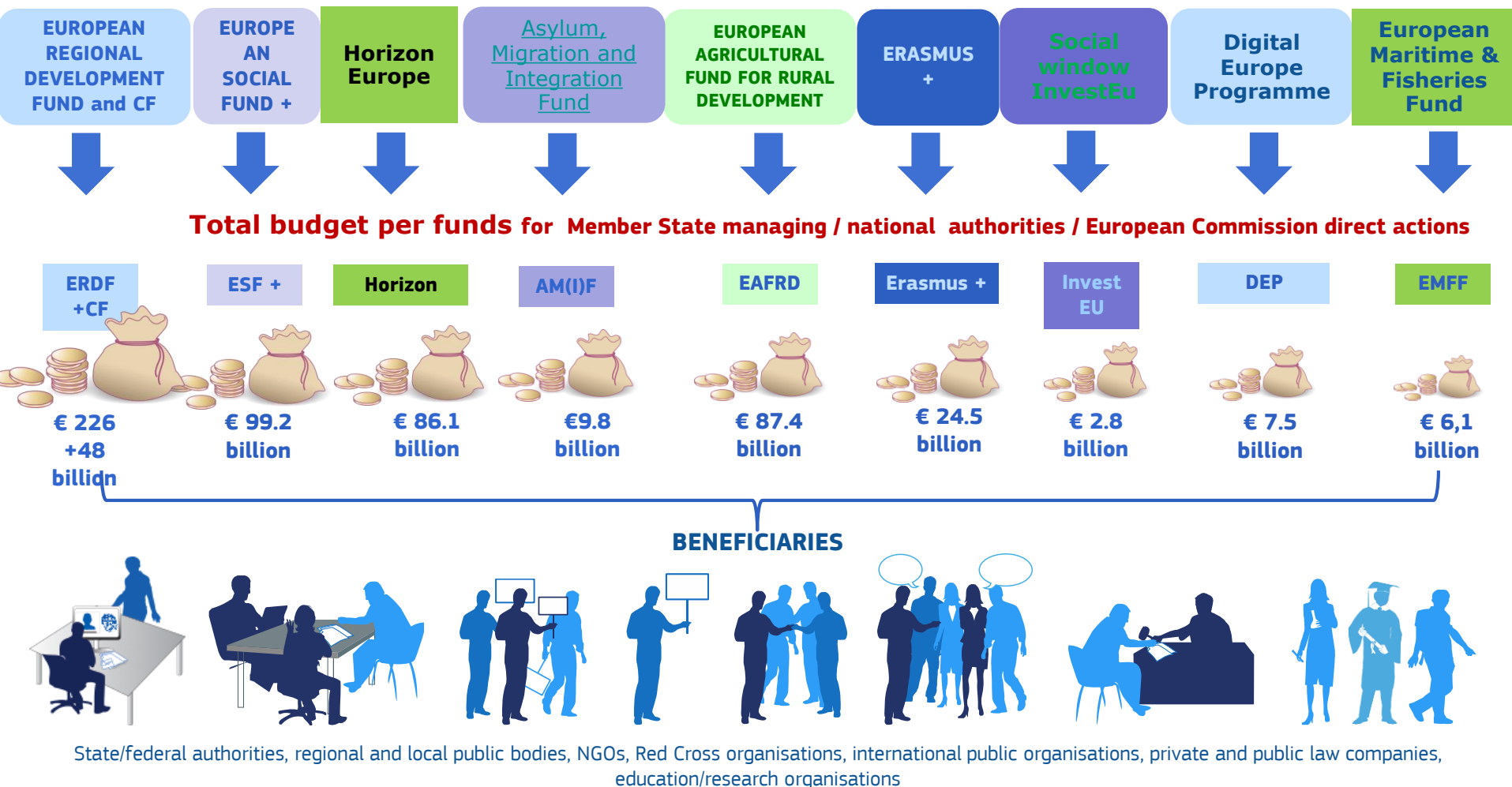
- Setting up and developing integration strategies
- Providing advice and assistance
- Introducing migrants to the receiving societies
- Promoting self empowerment of migrants

Results of actions 2014-2020

- 7 million migrants assisted
- 10 K cooperation and tools development projects



Main EU funds with potential to support integration actions - MFF 2021-2027



Synergies of actions supported by EU funds- examples

- **Reception and early integration**

Information, awareness raising and cultural actions

towards local communities before/upon arrival(AMIF) – establishing social housing (ERDF) – provision of other well-being/social assistance services (ESF)

- **Healthcare and assistance**

Developing tools of information, models of intervention; individual assistance for target groups (AMIF) – developing service units (ERDF) – training for healthcare staff (ESF)

- **Employment**

Mapping of skills and migrants' potential, language courses and information sessions (AMIF) - basic skills and vocational trainings (ESF) – support to business creation (ERDF, EAFRD)



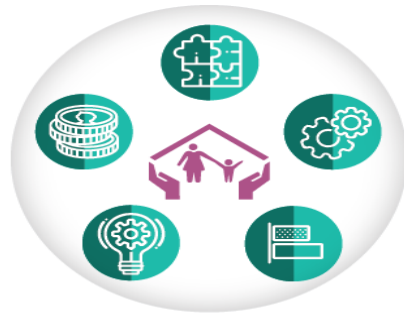


Building positive interactions to build dynamics and impacts

4 Ps interrelation

- Policies to frame actions
 - Potential offered by the migrants
 - Partnership between relevant actors
 - Performance of the funding
-
- *Coordination of structures to build Coherence of interventions ensured by Complementarities of funding*
 - *Impact of empowerment of administrations on empowerment of immigrants and inclusive communities*





EMPOWERING OPTIMISING LEVERAGING

Thank you for your attention!

Grzegorz Gajewski

grzegorz.gajewski@ec.europa.eu

