



# European Regional Development Fund (ERDF) support for the integration of people with a migrant background

*Final Conference of the JRC ERA "International Migrants in Functional Urban Areas"  
9 December 2021*

Otilia CIOBANU

DDG.03 Competence Centre - Inclusive Growth, Urban and Territorial Development  
DG Regional and Urban Policy

# Relevant legislative provisions – Common Provisions Regulation (CPR)

- ❖ **Art 8** (partnership principle) – involvement of relevant bodies, including in the Monitoring Committees (**Art 39**)
- ❖ **Art 8 (2)**: allocate funds for administrative capacity building of social partners and civil society organizations
- ❖ **Art 9** (horizontal principles): respect for fundamental rights, for the Charter, take appropriate steps to prevent any discrimination
- ❖ **Article 22(3)(d)(iv)** - Content of programs: for each SO include actions safeguarding equality, inclusion and non-discrimination
- ❖ **Article 73.1** – selection of operations: MA establish and apply criteria and procedures which are non-discriminatory (...) take account of the Charter

# ERDF support



- Measures should be connected across thematic areas, including, **education, employment, social housing, health and social care, anti-discrimination etc.**
- ERDF can support **infrastructure development, equipment and access to quality mainstream services** in all areas above
- Should **not lead to further segregation/isolation of marginalized communities** and building parallel services

## Thematic investment areas

- Regeneration of deprived urban and rural areas
- Shift from institutional to community-based services
- Addressing educational and spatial segregation
- Support for business start-ups

### Territorial instruments:

- ❖ ITI
- ❖ CLLD
- ❖ SUD



Examples of **ERDF-supported measures** for the integration of people with a migrant background:

- ❖ **Building/refurbishing/renting individual social housing** in the mainstream community / non-segregated areas + **complementary measures** in education, employment, health and social care ([also in the scope of desegregation measures](#))
- ❖ Extension of capacities of **mainstream kindergartens, schools, afternoon schooling, VET, labour market institutions, health and social care facilities** etc.
- ❖ **Bus transport** for people in marginalized communities to access the mainstream services above
- ❖ **IT equipment** to support access to distant and online education
- ❖ **Building family- and community-based** services for people with disabilities, children deprived of parental care, elderly (individual apartments, day centres, equipment, accessible transport etc.)

The needs of people with a migrant background can be also addressed through **territorial instruments** which provide for the possibility of designing place-sensitive response to local challenges with strong involvement of local actors.

## Main features for Cohesion Policy support for integrated territorial development:

- ❖ Interventions should be part of **territorial or local strategies** under the responsibility of relevant territorial authorities or bodies
- ❖ Locally coordinated interventions through an **integrated approach** (cross-sectoral, multi-stakeholder, multi-territorial)
- ❖ Relevant **local or territorial bodies involved** in project selection
- ❖ **Partnership with relevant actors** to be ensured at local level

# The territorial tools in 2021-2027

Support from the Funds to be provided for integrated territorial and local development in forms of:

- **ITI:** Necessary when territorial strategy receives funding from multiple priorities or even programmes, funds or POs, (CPR Art 24)
- **CLLD:** Specific delivery method to enhance the participatory approach, (CPR Art 25-28)
- **Other territorial tool:** recognizes nationally developed tools for territorial strategies (CPR Art 22(c))

# Initiatives to support policy making on integration

## Updated Toolkit on the use of EU funds for integration of people with a migrant background 2021-2027

- Legal and policy framework
- Synergies between EU funds
- Scenarios – reception, housing, inclusive education, access to basic services for vulnerable groups etc.

New chapter on local level of integration policy



- ❖ [European Urban Initiative \(EUI\)](#)
- ❖ [Urban Innovative Actions \(UIA\)](#)
- ❖ Urban Agenda for the EU [Partnership on Inclusion of Migrants and Refugees](#)

## Study on the territorial impact of migration with a special focus on the local level (OECD-EU Commission 2018)

- Statistical analysis – local data on integration of people with a migrant background
- 9 case studies (Barcelona, Amsterdam, Berlin, Athens, Paris, Althens, Glasgow, Vienna, Rome, Gothenburg)
- 12 points (checklist) for local integration policy making

# Content of updated Toolkit

1. Introduction
2. Objectives, scope and structure
3. **First lessons learned in the 2014-2020 period (new)**
4. Reinforcing synergies between EU funds
5. Integration pathways:
  1. Education - Ensuring access to inclusive and non-segregated education
  2. Housing – Ensuring access to adequate and non-segregated housing
  3. Employment – Addressing current and future challenges of the labour market
  4. **Social care and healthcare - Ensuring access to high-quality social care and healthcare (new)**
  5. Reception - Ensuring integration from day 1
  6. Basic mainstream services - Ensuring access to basic mainstream services for particularly vulnerable groups
  7. **Fighting discrimination and misrepresentation (new)**
6. **The role of local authorities in integration (new)**

## *For each scenario:*

- Scene-setter
- Challenges
- Measures (and how funds can contribute)



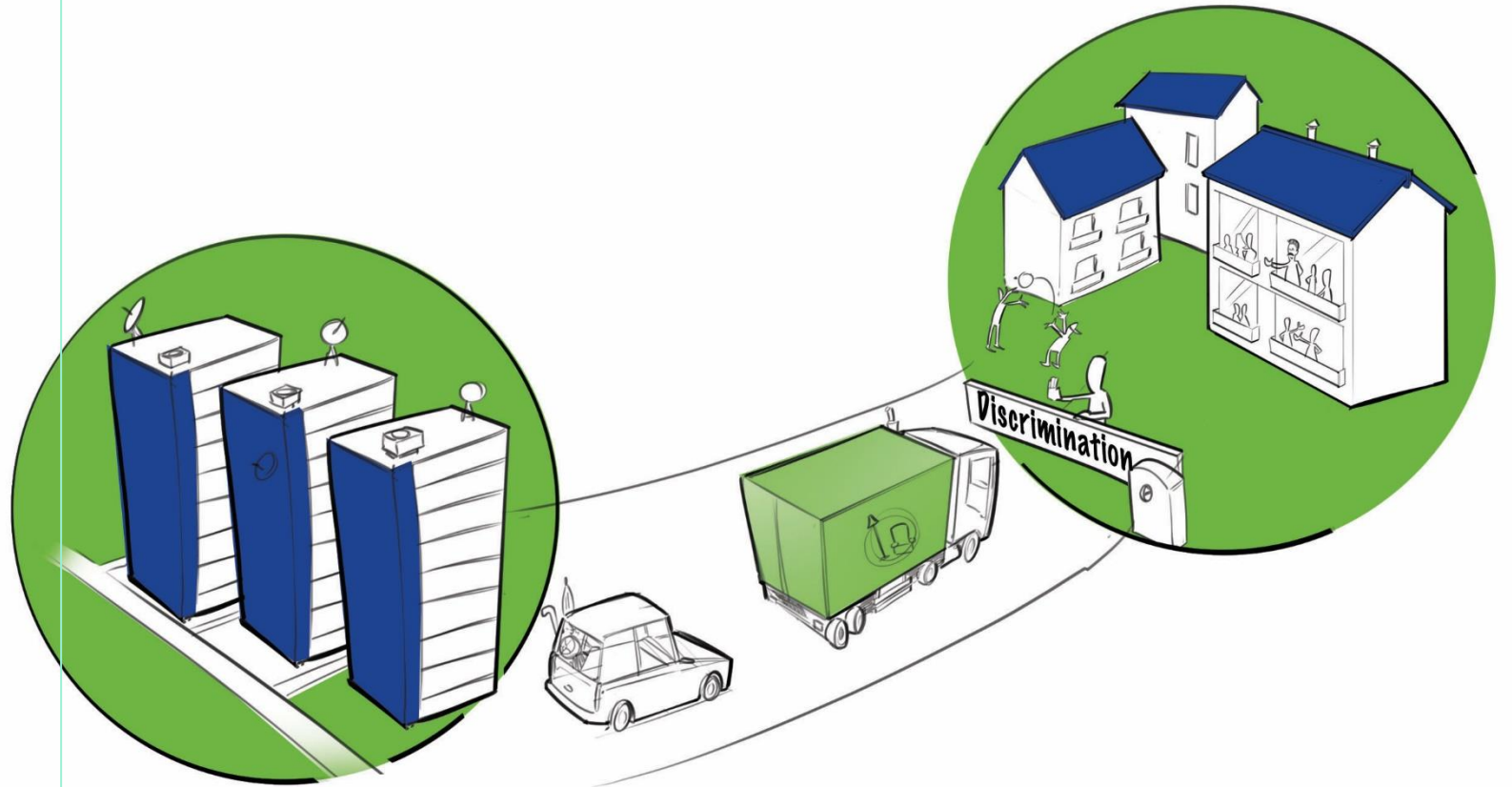
# Housing - Ensuring access to adequate and non-segregated housing

## Examples of challenges:

- Spatial segregation
- Overcrowding
- Discrimination

## Examples of measures:

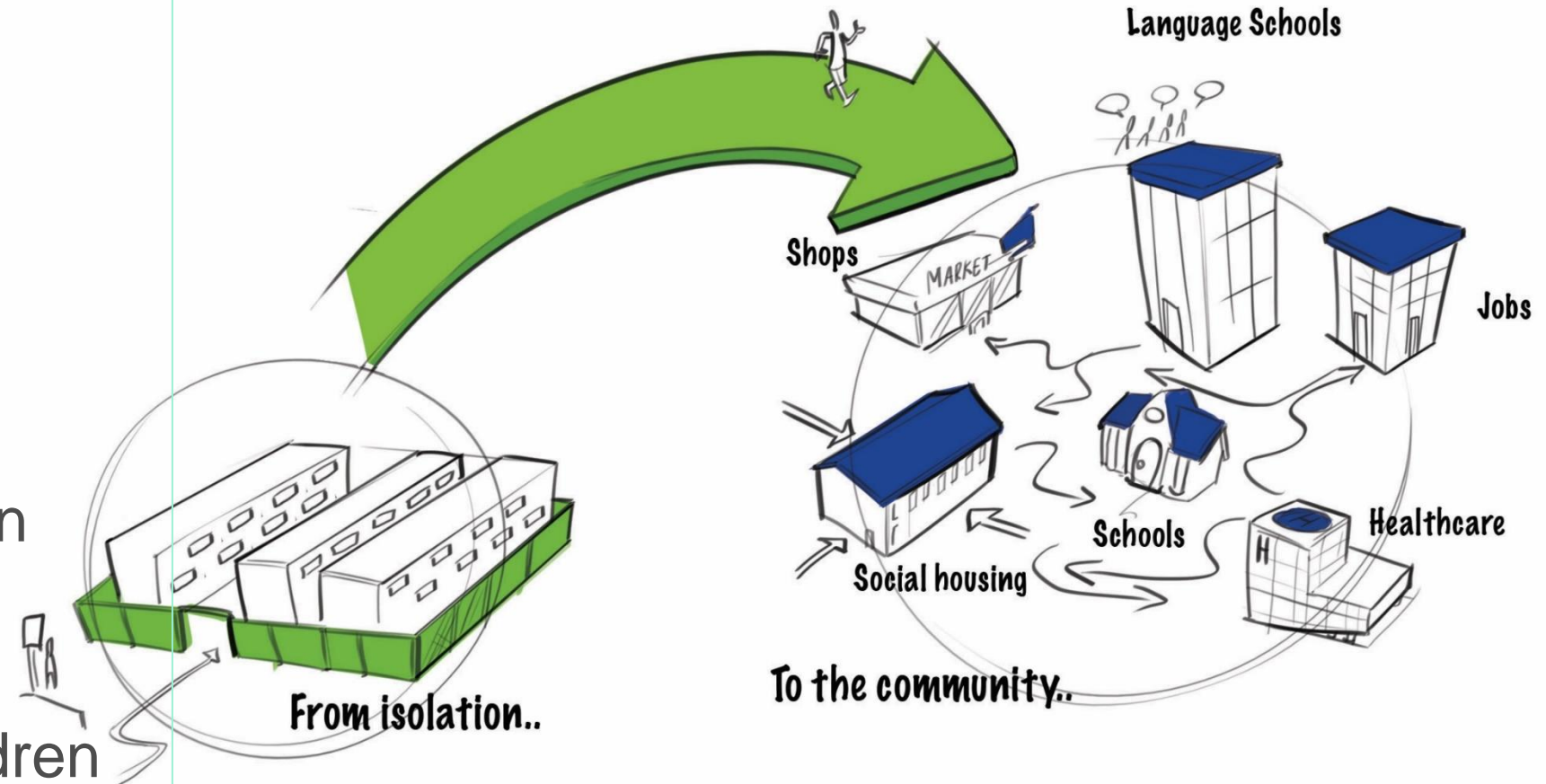
- Social housing
- Desegregation
- Anti-discrimination measures



# Reception - Ensuring integration from day 1

## Examples of challenges:

- Social and physical isolation
- Limited access to employment
- Limited access to mainstream education
- Unaccompanied children



# The role of local authorities in integration

## Examples of challenges:

- Access to EU funds for local authorities
- Applicability of international, European and national law at the local level
- Partnership and cooperation between national, regional and local stakeholders
- Addressing the needs of people with a migrant background in local development strategies
- High concentration of people with a migrant background in deprived neighbourhoods

## Examples of measures:

- Designing and implementing local development policies
- Supporting access to EU funds
- Regeneration of deprived neighbourhoods
- Community development and empowerment

# Novel instrument: European Urban Initiative



## Strand A. Support of Innovative Actions

- Testing of new solutions to urban challenges of EU relevance
- Scaling-up and transfer of tested solutions, in particular, to Cohesion Policy

## Strand B. Support of Capacity and Knowledge Building, Territorial Impact Assessments, Policy Development and Communication

- Capacity building of cities designing and implementing integrated sustainable urban development strategies – peer learning, space for exchange
- Access to thematic & horizontal knowledge and know-how – Knowledge Sharing Platform, capitalisation (Policy Labs, Thematic Reviews for Policy), Urban Contact Points
- Support to the Urban Agenda for the EU and intergovernmental cooperation

**Budget allocation:** EUR 450 million from the ERDF for 2021-2027

**Launch of activities:** in 2022 first EUI-Innovative Actions call foresees support to topics in the area of the New European Bauhaus

**Coordination and complementarity with URBACT IV** <https://urbact.eu/>

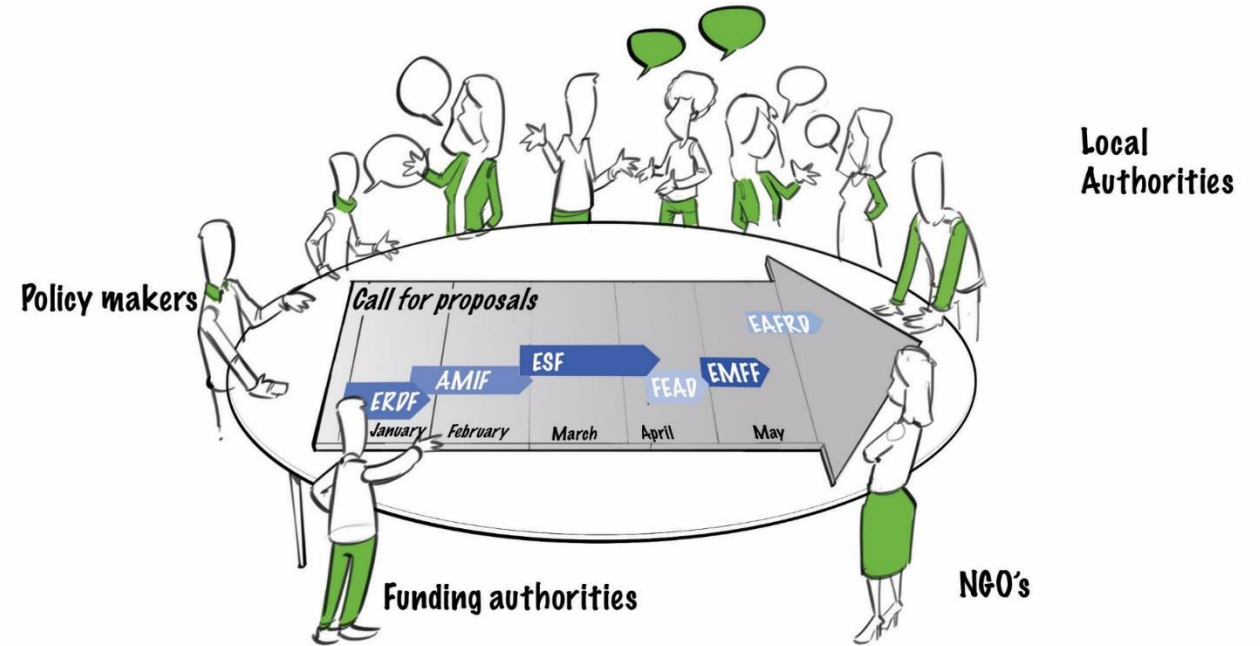
- Capacity building of cities in sustainable urban development and practices by supporting transnational networking of cities





# How to access EU funds?

- Shared management → call for proposals are published by managing authorities
- ERDF support in your country
- Open Data Platform (by theme, country, fund)



**Thank you for your attention!**